

Event Information

Covid We have no special Covid concept this year. You may test yourself if you like. But especially **not** speaking of Covid: Please stay at home if you feel sick.

Consent is more important than ever this year: Please be considerate – others might want more space between you than you do.

Food Food is not included in the admission. You need to bring enough food for yourselves. There are four fridges in the indoor kitchens to keep your stuff cool, but they are always full, so try to reduce stuff that needs cooling.

Beverages Beverages are not included in the admission.

Sound systems: Playing music on an event costs money in Germany. Please check if someone is organising "GEMA". Otherwise, we can't keep you guys from bringing smaller speakers for your personal enjoyment.

Noise As the castle grounds are surrounded by the town, we need to be quiet outside at night and reasonably quiet at day. Same goes for everywhere in the house.

No art grants and no money for your projects In order to keep the monetary entry level as low as possible, we only collect the rent plus event insurance from you. As we do not collect an excess to that, we do not have art grants or the like. For next time: <https://germanburners.org/foerderung-beantragen/> offers art grants, not only for Burning Burg.

How we organise co-creation We organise via the online spreadsheet <http://mitmachen.burningburg.de>. Every attendant has access to that sheet and should fill in their part. In that sheet you find shifts that need to be covered, workshop and activity timeslots, space for workshop and activity explanation. Email us if you have questions about art placing. Otherwise (if it is legal and not harmful and does not need resources that we would need to pay for): put it in the sheet and do it.

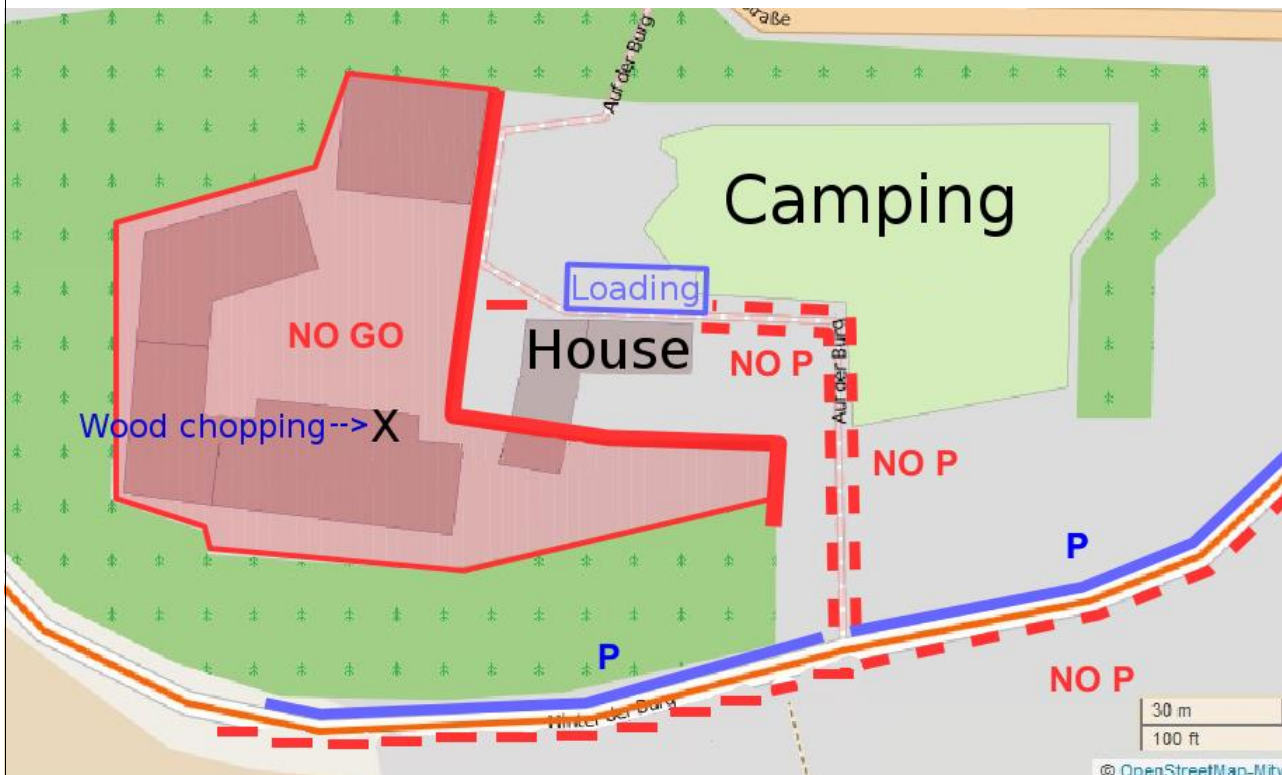
Arrival

Arrival by car Data for the GPS: Lutter am Barenberge - Auf der Burg 6 - then find the back entrance at "Hinter der Burg".

Arrival by train and bus The nearest train stations are Salzgitter Ringelsheim and Seesen. Use a public bus from there to Lutter am Barenberge. Get off at the Market Square (Marktplatz) and walk the last 200 meters up to the castle. The entry to the castle will be marked.

Rideshares Please post in the FB group page (My Burg is my castle) if you need or have a rideshare.

Parking NO parking on the castle grounds. The spaces in front of the entrance of the guest house are reserved for loading and unloading. After unloading, please park on the blue-marked areas outside the castle grounds. Please do not block or narrow the road when unloading – our hosts might need it for agricultural vehicles, for them it is a normal working day.



Remember to close the metal gate immediately after passing it, there might be free range animals of the castle farm. The path from the guest house to the rear gate must stay free of parking cars (emergency services access/ farm traffic).

Castle

The castle is run by a commune since the 80s. We will be the only guests.

Pets Dogs and other pets are not allowed. The castle is a farm with free range animals.

Castle Exploration Don't! You would disturb people at best, and at worst get yourself in some real danger. A guided tour can be organised (please heck in advance).

Toilets and showers

Toilets There are four toilets inside the building and two outside. You need to bring toilet paper. If you find toilet paper, soap, or towels (or have found these in recent years), some kind soul has provided them.

Showers There are 3 showers in the house and one outside. The fourth indoor shower can only be reached via a bedroom where people sleep and should only be used by people in that room this year.

Guest house

The guest house (our accommodation) has four areas, each with a toilet and a fully equipped kitchen (with enough pots, crockery, and cutlery). There is a bathroom with shower for each area, hot water is produced with solar power. The rooms are equipped with two to six beds. Use of the other indoor rooms is limited this year because of Corona.

Rooms The rooms are pre-assigned, your greeter will advise you which room you get.

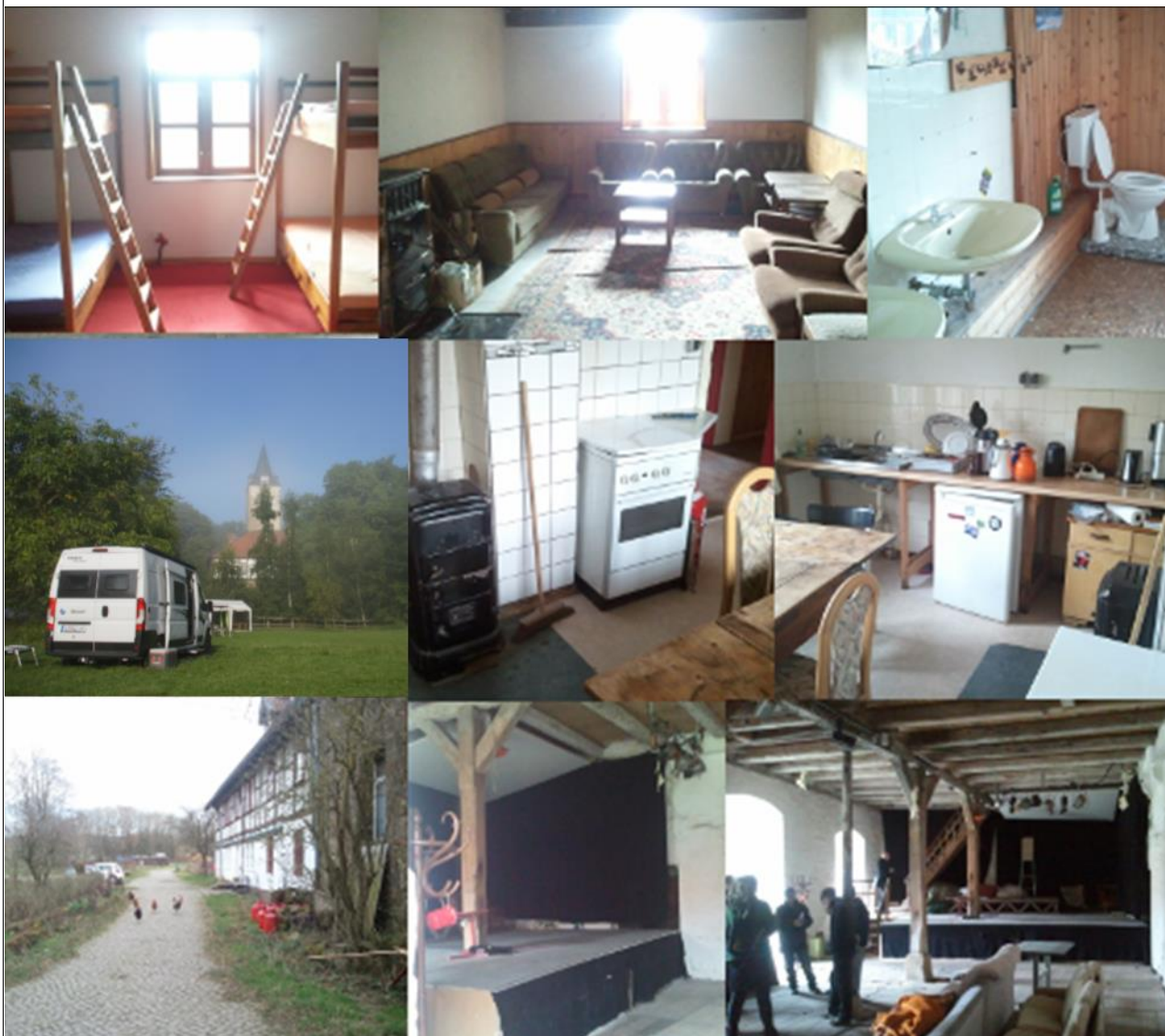
Windows If you open a window, "hook" it fixed, please.

Wood in the house There is central heating in the house, plus ovens in some rooms. There is no more wood in the house for the ovens. Do not use the fireplace wood for the ovens.

What do I need to bring?

If you registered for a bed: Bedding or a sleeping bag plus pillow.

Everyone: Toilet paper! Towels, slippers, or thick socks. Please do not enter the living areas (including costume camp, corridors, kitchens and living rooms) with street shoes. Costumes. Gifts!



Camping

Camping area No cars, no fire. Spaces in front of the entrance of the guest house for loading and unloading. Caravans may be parked at the boundary of the camping area. Campers **may only park** on the camping area **with a collecting container or a large tarp under the engine and other leaky parts** of the vehicle. There is a toilet house in front of the entrance for the campers, and there are toilets and showers inside the house (see guest house).

Camp fire

Camp fire There is ONE official, large and cosy fireplace. We will create and burn our effigy here. No other fires allowed.

Grocery shopping

Shopping Leaving the castle grounds is discouraged. Please plan ahead and bring whatever you need. If you have to leave: in the castle shop there might be some self-produced food available directly from the castle commune (eggs, juice from their own cider, possibly even sausage - just ask).

Trash

Trash bins (black) are at the side of the house. Packing Material has to go into separate yellow bags. These are provided in the kitchens. Please put these besides the trash bins outside. Please collect bottles (wine/ High Spirits) there too or take them to the recycling stations in the village when you leave.

Co-Creation

Radical Self Reliance is the rule here too. Bring what you need to set up and clean up yourselves. **Burning Burg is what YOU make of it.**

Clean Up

Leave no trace Before you leave, please ensure that you swept everything, wiped, rinsed, cleaned up. **Living rooms, corridors, kitchens, bathrooms, castle room, paths, camping, campfire, and parking area must be clean and ready for the next group when we leave.** Empty returnable bottles you brought must be taken away again, and glass bottles should be disposed of in the waste glass containers in the village or at home. If more residual waste originates than the bins can accommodate, we can pay for extra garbage bags from the castle people. Only these garbage bags are collected.

Very Responsible Sober Person

We have one dedicated sober person (visibly carrying a yellow sign, also see photo at the entrance of the guest house) per day to help you deal with external forces like Police and Emergency Services, if something happens. This person also is the contact for people in distress.

Some No-Nos

- Do not leave anything you used unclean in the kitchens or outside, bring it back to the kitchen where you took it from.
- Do not post photos from the event anywhere (other than the secret Facebook group).
- No laser lights allowed.
- We value our privacy at this event, Press or Media are not welcome.
- No filming for documentaries allowed.

“Be good”

Please be respectful with the gifts you get. We had some rather disgusting behaviour with people demanding food and shoving the cooks away. Food offerings are gifts. Wait for it to get ready and be thankful IF you get something.

Liability

Participate at your own risk. You are fully liable for all of your actions.